

Approved 7-9-20

Gluckstadt Office Warehouse
C-2

Ebenezer Drive

Dogwood Office Center
C-1

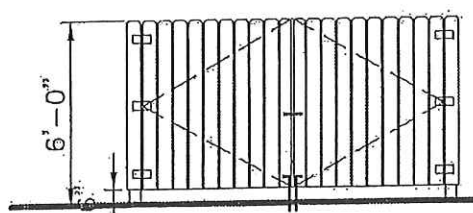
Ravinders & Satvinder Bedi
C-2

Clayton & Lucy Taylor
C-1

⊕ SITE PLAN
SCALE 1"=30'-0"

14,400SF TOTAL
 3,000SF OFFICE = 3,000SF/225 = 13.3 PARKING SPACES
 11,400SF WAREHOUSE = 11,400SF/1,000 = 11.4 PARKING SPACES
 TOTAL REQUIRED PARKING = 25 PARKING SPACES
 TOTAL PROVIDED = 26 PARKING SPACES

TOTAL SITE = 47,480SF
 LOT COVERAGE = 30%
 ZONING C-2
 USAGE = OFFICE / WAREHOUSE



⊕ DUMPSTER ELEVATION
SCALE 1/4\"/>

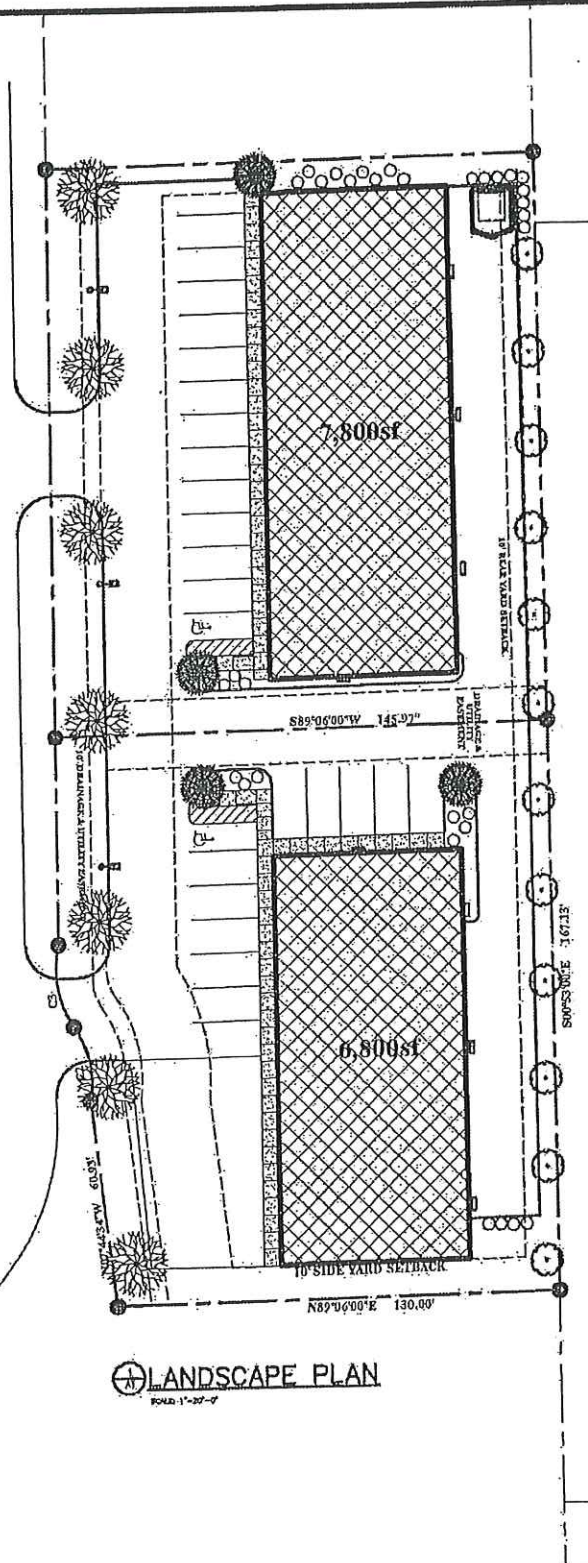
REVISIONS	BY



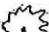




L & A Office Warehouse
Madison, Mississippi

DATE: 2/27/20
 DATE:
 SCALE:
 JOB NO.:
 SHEET:
A1.0

Ebenezer Drive



-  WILLOW OAK, QUERCUS PHELLOS,
8 - 10' HTH., 1 - 3" CAL.
-  NATCHEZ GRAPE WYRLE,
"LAGERSTROEMIA INDICA X FAURIER"
7' HTH., 1-1" S.T., 3
TRUNKS/MIN.
-  RED MAPLE, "OCTOBER GLORY",
ACER RUBRUM OCTOBER GLORY,
8 - 10' HTH., 1 - 1" CAL.
-  SWEETBAY MAGNOLIA, "MAGNOLIA VIRGINIANA"
-  SOUTHERN INDICA AZALEAS,
RHODODENDRON INDICA
3 GAL.; 3'-8" O.C.

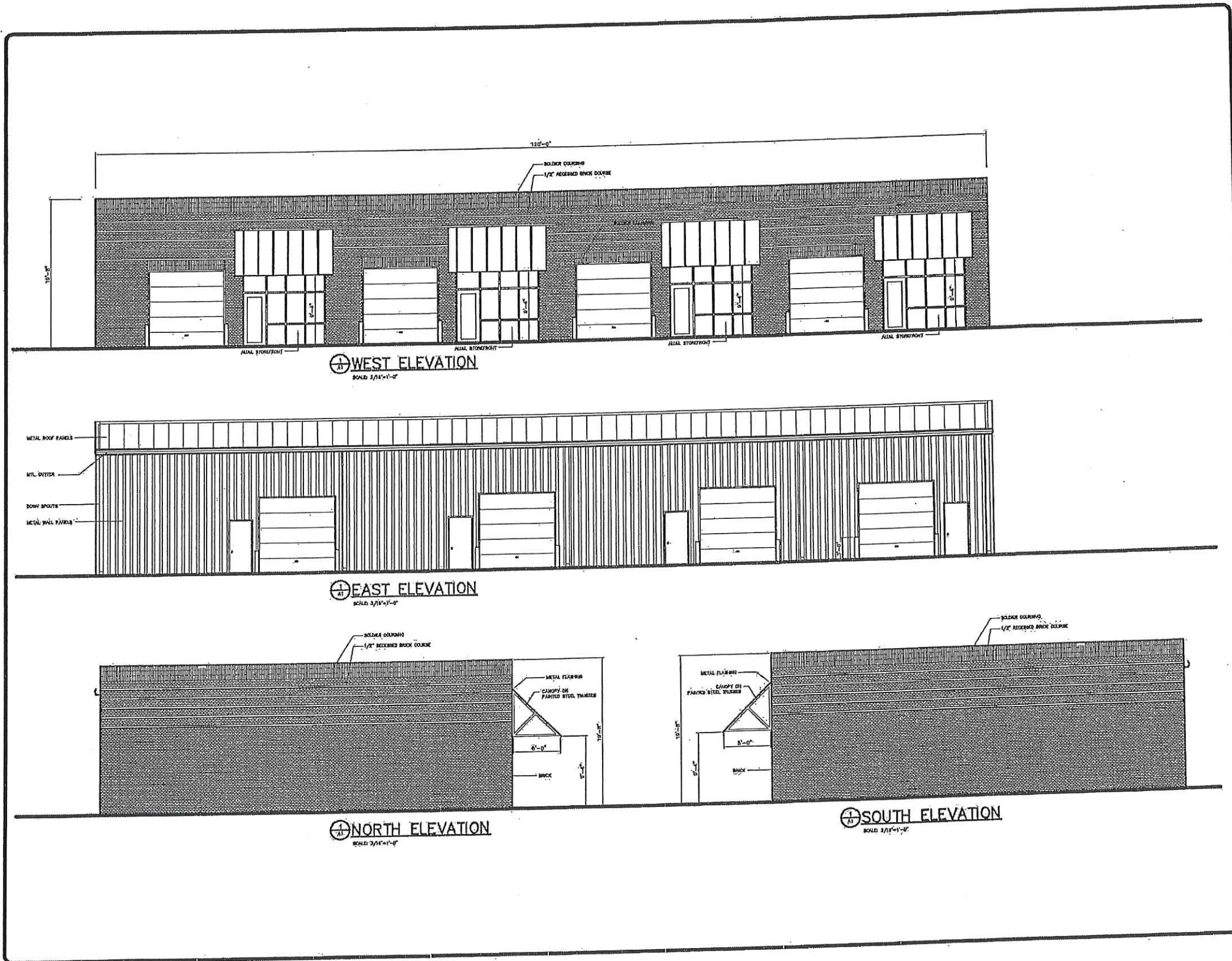
LANDSCAPE PLAN
SCALE: 1"=20'-0"

REVISIONS	BY



L & A Office Warehouse
Madison, Mississippi

DATE: 2/27/20
DRAWN BY: [blank]
CHECKED BY: [blank]
SCALE: 1"=20'-0"
PROJECT NO.: [blank]
SHEET NO.: **L1.0**



REVISIONS	BY



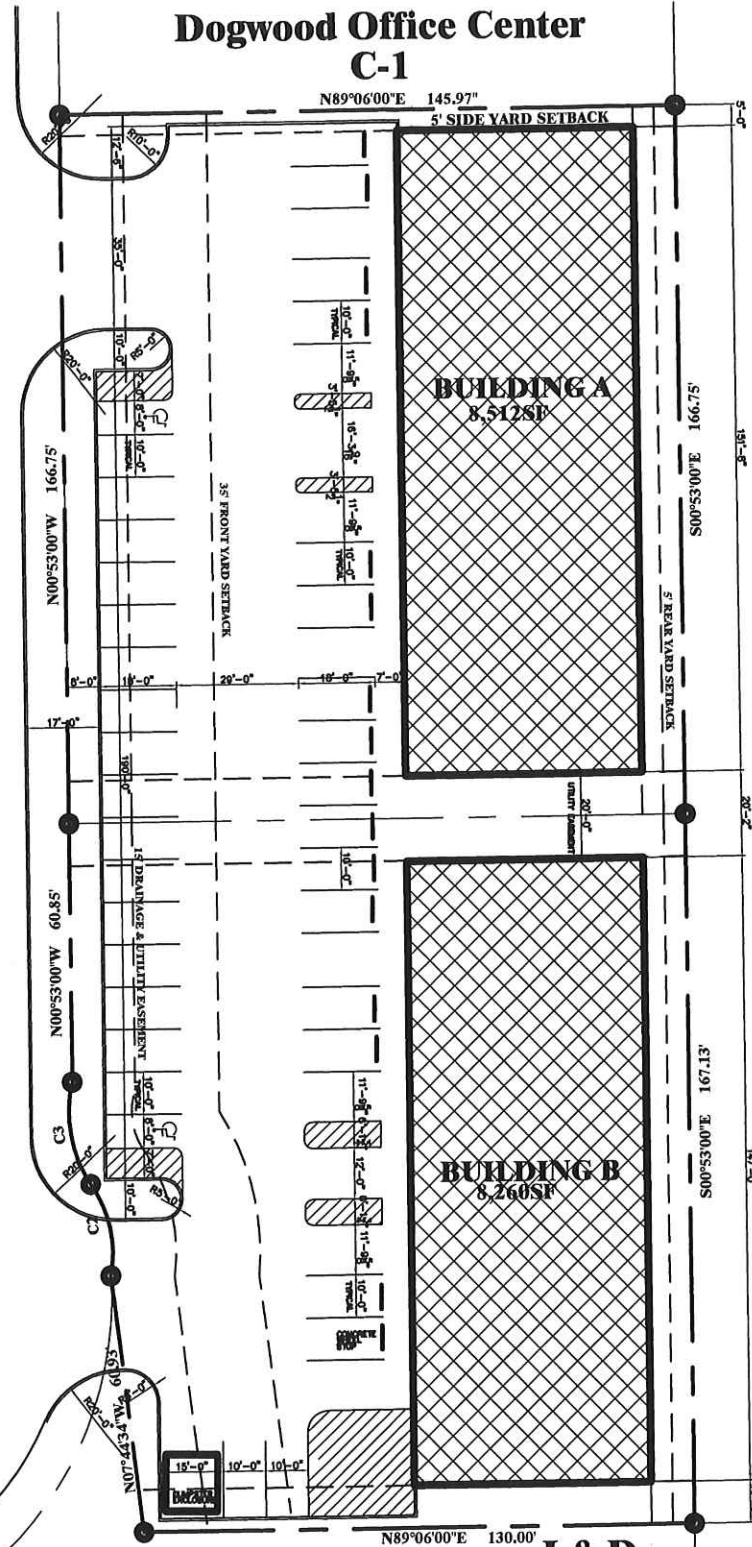
L & A Office Warehouse
Madison, Mississippi

DATE
2/27/20
DWG.
SCALE
AS SH.
BY
A1.0

Amended

Gluckstadt Office Warehouse
C-2

Lexington Drive



SITE PLAN
SCALE: 1"=20'-0"

16,772SF TOTAL
6,848SF OFFICE = 6,848SF/300 = 22.8 PARKING SPACES
9,924SF WAREHOUSE = 9,924SF/1,000 = 9.9 PARKING SPACES
TOTAL REQUIRED PARKING = 32.7 (35) PARKING SPACES
TOTAL PROVIDED = 46 PARKING SPACES
TOTAL SITE = 47,480SF
LOT COVERAGE = 35%
ZONING C-2
USAGE = OFFICE / WAREHOUSE

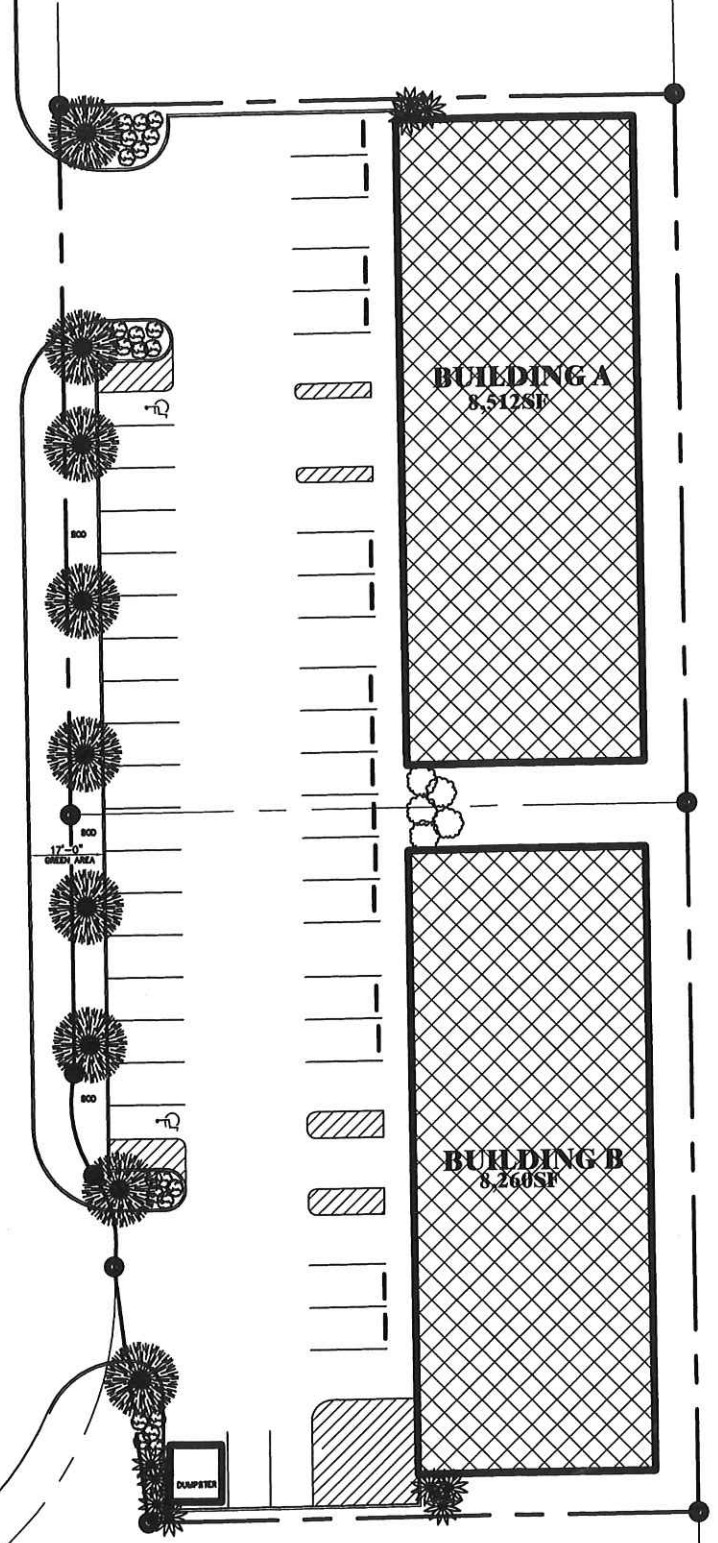
Clayton & Lucy Taylor
C-1

Ravinders & Satvinder Bedi
C-2

J & D
C-2

Gluckstadt Office Warehouse
C-2

Lexington Drive



LANDSCAPE PLAN
SCALE: 1"=20'-0"

- NATCHEZ CRAPE MYRTLE, "LAGERSTROEMIA INDICA X FAURIEI" 7' HTH., 1"-1" S.T., 3 TRUNKS MIN.
- ⊙ PARSON JUNIPER, JUNIPERUS CHINENSIS "PARSONII", 3 GAL. Ⓞ 3'-6" O.C.
- SOUTHERN INDICA AZALEAS, RHODODENDRON INDICA 3 GAL. Ⓞ 3'-6" O.C.
- ✻ POMPPOUS GRASS

REVISIONS	BY



BUILDING A & B LEXINGTON DR
Gluckstadt, Mississippi

DRAWN
CHECKED 1/21/21
DATE
SCALE
JOB NO.
SHEET
A0.0
OF SHEETS

